

Greetings - The Winter 2024-25 Session Approacheth!

After basking in the glory of a job well done this past summer, the time has come to turn our attention to cooler weather and a brand new session of Potsdam Community Band! It'll be something of a new era for PCB, as we soldier on without the presence (and sound!) of Dr. Jim Madeja leading the trumpet section. But, the only thing constant in life is change, so let's do this thing!

The winter season of PCB kicks off on Monday, November 18 at 7:00 pm in Crane rehearsal room C-107. Subsequent rehearsals will be held on Mondays November 25, December 9, December 16, January 6, January 13, and Thursday, January 16 (dress rehearsal), with the winter concert on Sunday, January 19 at 3:00 pm in Hosmer Concert Hall.

If you can't wait to jump in for this season, please click this link

https://docs.google.com/forms/d/e/1FAIpQLSc7gncF7cRwN_rpBRj9gFyv5rJEBAimEBrgYrhAwBDQokUGg/viewform to go to our sign-up survey, or keep an eye out for a dedicated survey email in the coming days. Either way, the deadline to complete the sign-up survey is Sunday, October 20.

Paul Haggett, Information Captain for
the PCB Leadership Team:

Theresa Witmer, Music Director
Ron Berry, Treasurer
Jennifer Myers, Personnel & Technical Coordinator
Kim Adams, Librarian Team Coordinator
Brienne Sterling, Program Leader

From the Music Director...



As I write this, it's a beautiful early-fall Saturday, perfect for hiking, mowing the lawn, gardening, and just enjoying the sunshine. Less than two months from now, when our rehearsals begin at the Crane School of Music, it will most likely be very different weather, but I happily anticipate the joy and warmth of making music with you wonderful PCB musicians!

I'm looking forward to being back on the podium and am in the fun process of planning the program; I promise to send you the list when I'm finished.

It was a great summer with PCB: I thoroughly enjoyed playing saxophone in the group under the baton of Jim Madeja, hopefully not for the last time.

We have been incredibly fortunate to have Jim as principal trumpet and frequent guest conductor since PCB (re)started 15 years ago and he and Tammy will be missed so much!

Back on the subject of Crane, please keep this link handy:

<https://www.potsdam.edu/academics/crane-school-music/crane-school-music-live-concert>

There are so many excellent (and *free!*) concerts at Crane. The list for October alone has a wide variety of performances. This Thursday, October 3rd at 7:30 in Hosmer Hall, both the Symphonic Band and the Concert Band will be performing. You can even see the program for both bands, [here!](#) It's an excellent opportunity to hear some music you know and some you probably *don't* know yet! I'm regularly impressed and inspired by the playing of the Crane students. I hope to see you in PCB this fall.

Theresa



Invite a Friend to Community Band!

Playing in PCB is fun! We all know that. Have you ever considered inviting a music-loving friend or family member to share the fun with you? Personally inviting someone who plays a band instrument at least at high school level to come and experience a rehearsal is one of the best ways to keep our band strong and vibrant. We pride ourselves on being inclusive...no auditions, and no pressure! So if you know someone you think would enjoy PCB like you do, pass this newsletter along, send us their email, and encourage them to fill out our season survey!



Limited PCB Polo Shirts Still Available

If you are new to the band, are a returning member after some time away, or just missed the opportunity over the summer, we still have a few PCB polo shirts available for purchase. We have a variety of mens sizes, but very limited ladies available. We typically wear our white polos for summer concerts and “concert black” for the winter concert. If interested, send us an email to potsdamcommunityband@gmail.com.

Leadership Team News



In our opening greeting, you may have noticed a new name in our list of band members taking a leadership role in PCB. Thank you to Kim Adams, a member of our trumpet section, who will be taking on the role of Librarian Team coordinator this session. There are other important jobs that still need filling, such as sweep, publicity coordinator, and set-up captain. If you feel called to take on a little larger role in PCB, please let us know what you can do to make the overall experience even better for all your band mates!



Group Success Takes Individual Commitment

It's a no-brainer...regular, consistent attendance at band rehearsals is really the biggest factor in the ensemble sounding the best we can. At the same time, we understand that there are sometimes schedule conflicts and “life events” that occasionally keep us away from rehearsals. That’s where individual practice and preparation come into play! We have only seven scheduled rehearsals (including the dress) to

prepare for our upcoming concert, and we make every effort to advertise the rehearsal schedule well in advance. For this reason, we are asking for a **MINIMUM** attendance commitment of five rehearsals, with the dress rehearsal being mandatory. **ANY** exceptions to this guideline **MUST** be approved by the Music Director (and a commitment made to further personal practice!).

Inclement Weather Plan

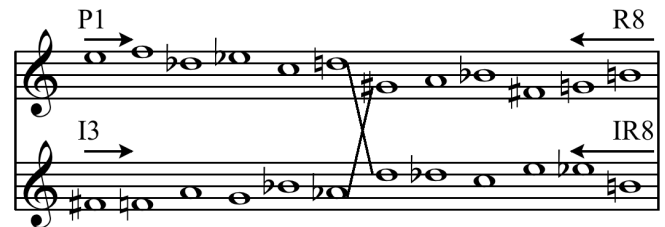
One of the challenges of operating PCB during the cold weather months is dealing with the potential for weather-related cancellations of rehearsals or even concerts. However, we have a plan for that!

In general, if school is canceled at Potsdam Central School, there will be NO rehearsal that evening. In addition, we will offer band members the opportunity to be notified by text if rehearsals or a concert is canceled or postponed. We will also, of course, notify members by email of a cancellation.

Your safety is of utmost importance, so even if a rehearsal is not canceled, please DO NOT risk driving if you do not feel safe! Please do contact your section leader and send us an email telling us you won't be there, but stay home if it's dicey!



Band Starts November 18!



ARPEGGIOS! SCALES! LONG TONES!!

WARM-UPS!!

TAKE TIME TO GET READY TO PLAY!

